

NEXUS RESIDENCY

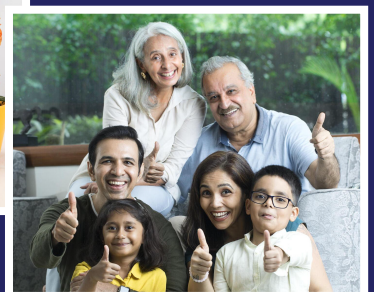
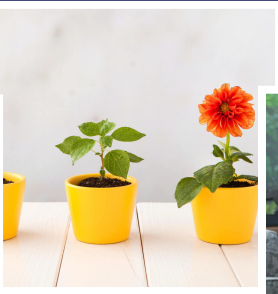
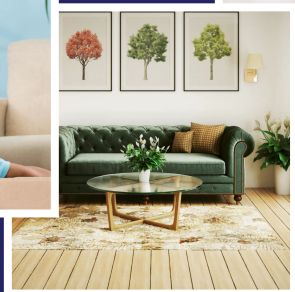
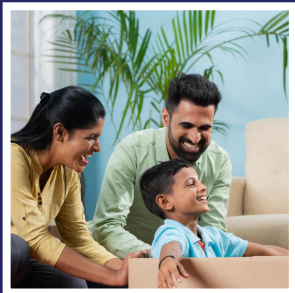
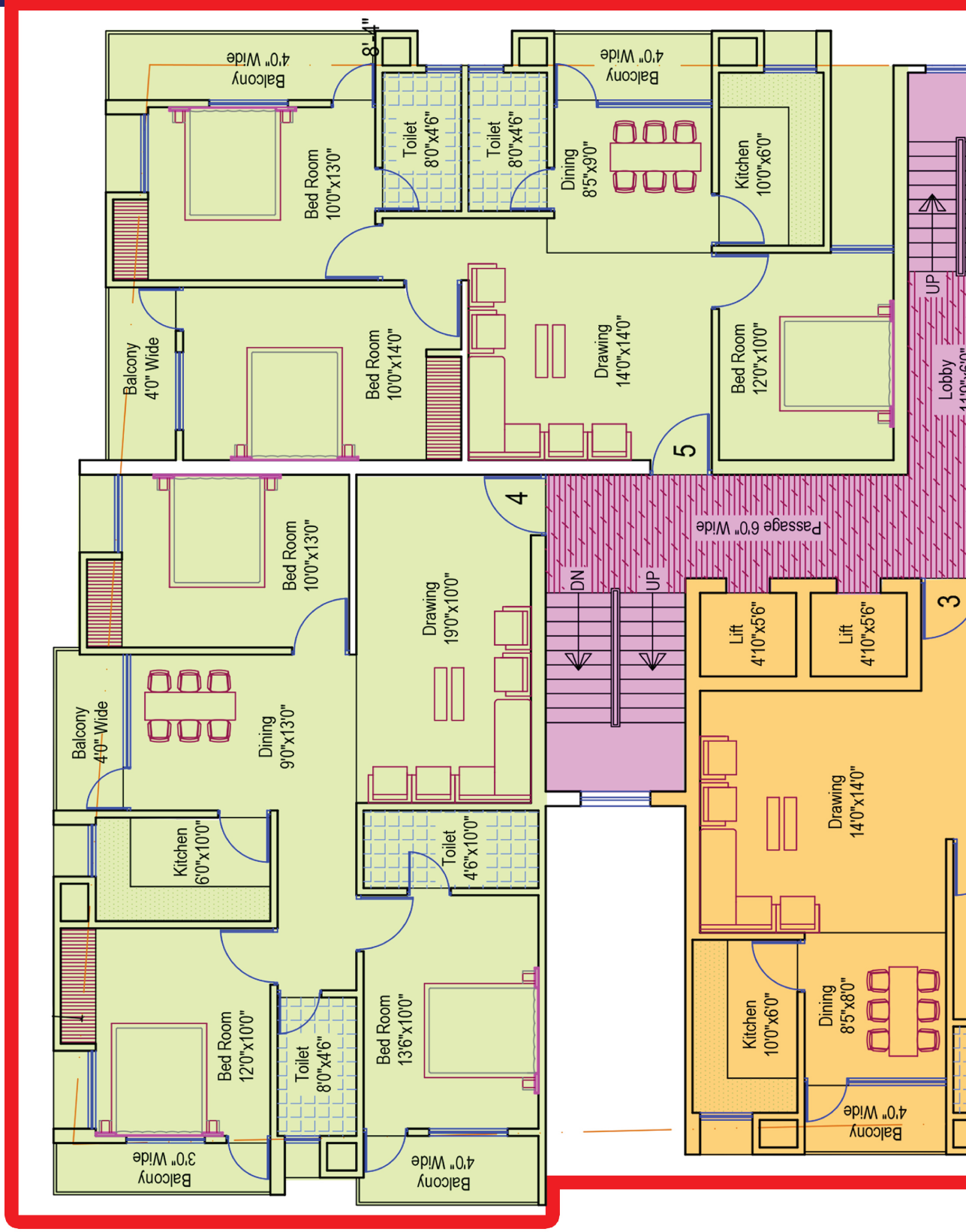


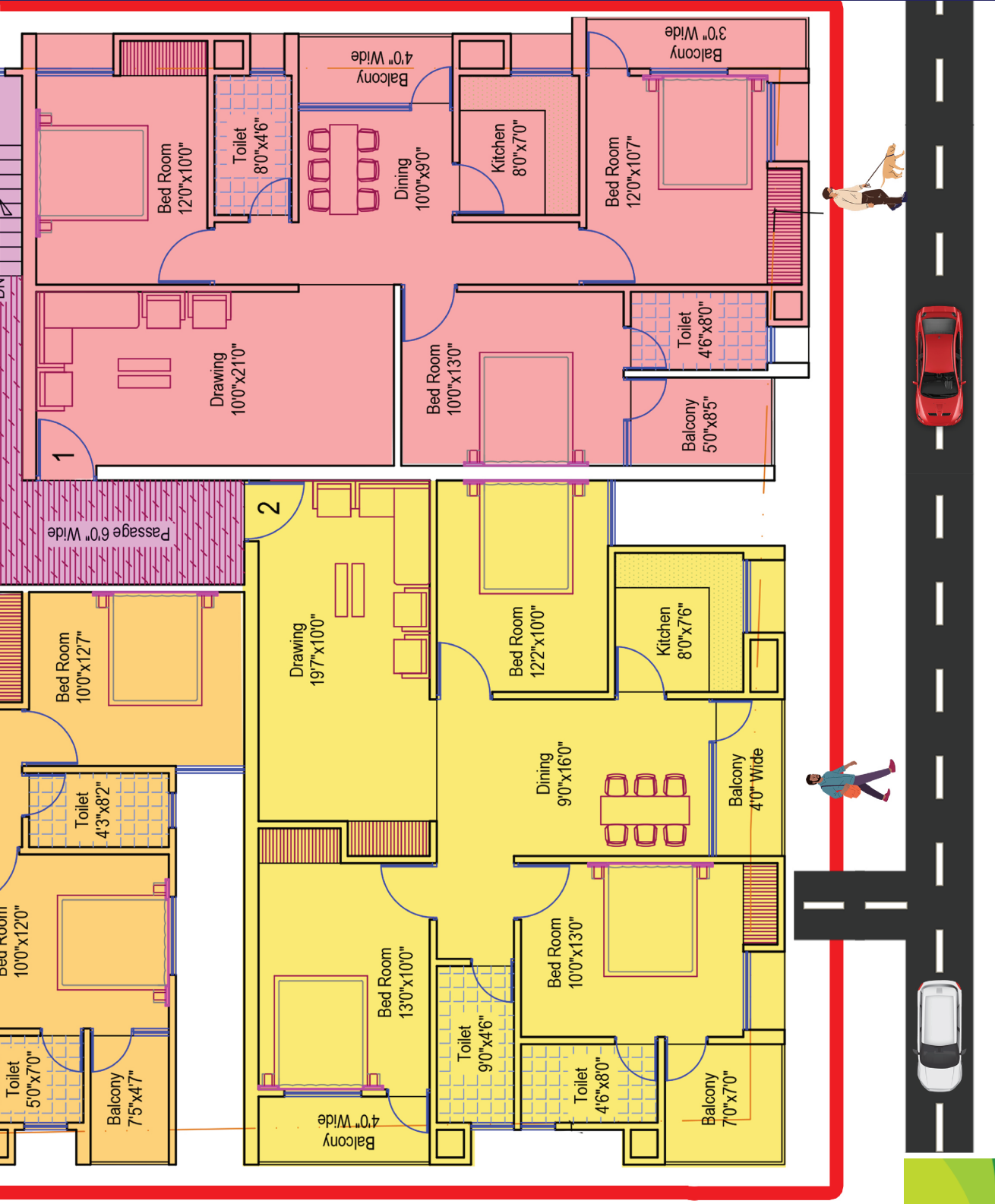
NEXUS
GREEN HOMES
PVT. LTD.



Bank Colony Rd, Chiraundi, Morabadi,
Ranchi, Jharkhand 834009

For Booking: 93415 28203 | Toll Free: 1800-8919-757





FLAT PLAN			
NO.	FLAT	B/U AREA	SUPER B/U AREA
1.	1 3 B.H.K.	1110. sq. ft.	1390. sq. ft.
2.	2 3 B.H.K.	1155. sq. ft.	1445. sq. ft.
3.	3 2 B.H.K.	860. sq. ft.	1075. sq. ft.
4.	4 3 B.H.K.	1125. sq. ft.	1405. sq. ft.
5.	5 3 B.H.K.	1060. sq. ft.	1325. sq. ft.

SPECIFICATION

Structure :-



- ◆ RCC framed structure with brickworks in cement mortar as per design & specification of structure consultants.

Wall finish :-



- ◆ Interior walls :- Plaster of paris with a coat of primer over it.
- ◆ Exterior walls :- ISI marked weather coat over resinic finish

Doors :-



- ◆ Main entrance Door :- Flush door with wood frames with magic eye, safety chain.
- ◆ Internal Doors :- water proof flush door with wood frames with cylindrical locks.

Windows :-



- ◆ Powder coated UPVC frame with toughend glass.

Flooring :-



- ◆ Vitrified tiles in living/ dining space
- ◆ Vitrified tiles in all bedrooms.
- ◆ Anti- skid ceramic tiles in kitchen & toilets.
- ◆ Anti skid tiles in balcony.

Toilets :-



- ◆ Standard make white glazed sanitary ware and CP fittings (Jaquar/Marc)
- ◆ Wall ceramic tiles up to door Heights.
- ◆ Provided Hot and cold line with wall mixture in all Bathroom & Kitchen with Necessary Fittings.

Kitchen :-



- ◆ Stainless steel sink and taps of reputed make.
- ◆ Polished granite counter and glazed tiles dado upto 2'0" height.
- ◆ Provision for water inlet of filter
- ◆ Exhaust provision.

Electricals :-



- ◆ ISI marked concealed copper wiring with modular switches & sockets of reputed make.
- ◆ AC point, TV point & Telephone socket in living, dining & Master bedrooms.
- ◆ Sufficient electrical points. Electrical point for Geyser, exhaust, washing machine, microwave, refrigerator ,water purifier , computer, and mobile charging.

Staircase :-



- ◆ Spacious staircases with Granite flooring with Stainless Steel Railing

Balcony :-



- ◆ Stainless Steel railings

Water supply :-



- ◆ Provision of 24 hrs. round the clock water supply through deep borewell with submersible pump.

Lift :-



- ◆ Lift with 24 hrs. generator backup & fully equipped make Otis / Kone or equivalent.

Generator :-



- ◆ Standard make sound proof generator make Kirloskar / Cooper or Equivalent

Security & Maintenance :-



- ◆ Security guard, CC TV camera etc. Maintenance charges are paid by flat owners, after completion of flats, these charges are fixed by builder in the term of six months after that these are handled by flat owners.

MODE OF PAYMENT

- ◆ 15% at the time of Booking.
- ◆ 20% at the time of Excavation & Foundation.
- ◆ 20% at the time of Commencement of Booked Floor roof casting.
- ◆ 15% at the time of Commencement of Brick Work.
- ◆ 10% at the time of Commencement of Plaster Work.
- ◆ 15% at the time of Commencement of Flooring & Finishing work.
- ◆ 5% 15 days before at the time of Handing over of the Flat.

